



SB-256

SB-256

SELECTIVE ELECTROSTATIC STORAGE TUBE

256 BI-VALUED SIGNALS

VISUAL READOUT

RANDOM ACCESS

UNLIMITED STORAGE TIME

BI-VALUED ADDRESS SIGNALS

For use in electronic computing machines

DATA

General:

Heater, for Unipotential Cathode:

Voltage. 50. ± 5% ac or dc volts

Current. 0.62 amp

Direct Interelectrode Capacitances (Approx.):

Writing Plate to all other electrodes. 112 μμf

Reading Plate to all other electrodes. 56 μμf

Storage Element to Writing Plate 0.8 μμf

Storage Element to Collector Plate 0.8 μμf

Reading Wire 20 μμf

Bias Select Bars 0 volts

Cutoff Voltage:

H Bars Collector Voltage

V Bars ¼ Collector Voltage

Collector Voltage 175 volts

Faraday Cage Voltage 300 to 900 volts

Reading Wire Voltage above Faraday Cage 150 volts

Reading Plate:

Bias 350 volts

Pulse 0 volts

Writing Plate:

Bias 0 volts

Writing Pulse 100 volts

Cathode Current:

All gates open 100 ma

One gate open 350 μa

Phosphor: P1

Fluorescence Green

Phosphorescence. Green

Persistence. Medium

Overall Length 9-1/2" ± 5/8"

Greatest Diameter of Bulb 3"

Weight (Approx.) 2 lbs

Operating Position Any

This Document:

Authenticity none

Accuracy best effort

Socket Alden Part No. 435SBA

Base Thirtyfivar 35-Pin
(JETEC No.E35-16)



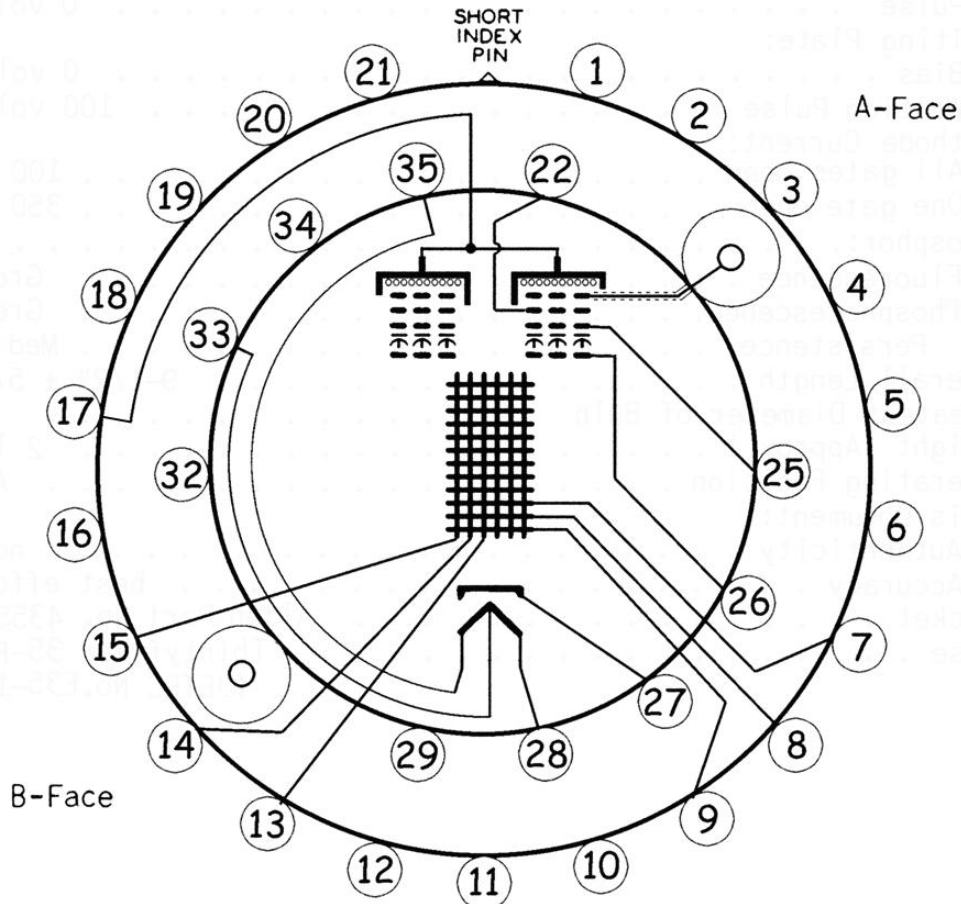
SB-256

SB-256

SELECTIVE ELECTROSTATIC STORAGE TUBE

BOTTOM VIEW

- Pin 1 - H1 Bar
 - Pin 2 - V1' Bar
 - Pin 3 - V2 Bar
 - Pin 4 - V2' Bar
 - Pin 5 - H2 Bar
 - Pin 6 - Faraday Cage
 - Pin 7 - H4' Bar
 - Pin 8 - H2' Bar
 - Pin 9 - H6' Bar
 - Pin 10 - H8' Bar
 - Pin 11 - Faraday Cage
 - Pin 12 - H4 Bar
 - Pin 13 - V4 Bar
 - Pin 14 - V1 Bar
 - Pin 15 - V3 Bar
 - Pin 16 - H4 Bar
 - Pin 17 - Faraday Cage
 - Pin 18 - H3' Bar
 - Pin 19 - H1' Bar
 - Pin 20 - H5' Bar
 - Pin 21 - H7' Bar
 - Pin 22 - Read Plate A
 - Pin 23 - Shield A
 - Pin 24 - Output A
 - Pin 25 - Write Plate A
 - Pin 26 - Collector A
 - Pin 27 - Cathode
 - Pin 28 - Heater
 - Pin 29 - Read Plate B
 - Pin 30 - Output B
 - Pin 31 - Shield B
 - Pin 32 - Write Plate
 - Pin 33 - Heater CT
 - Pin 34 - Collector B
 - Pin 35 - Heater
- Pins 23/24 and 31/30 are coaxial



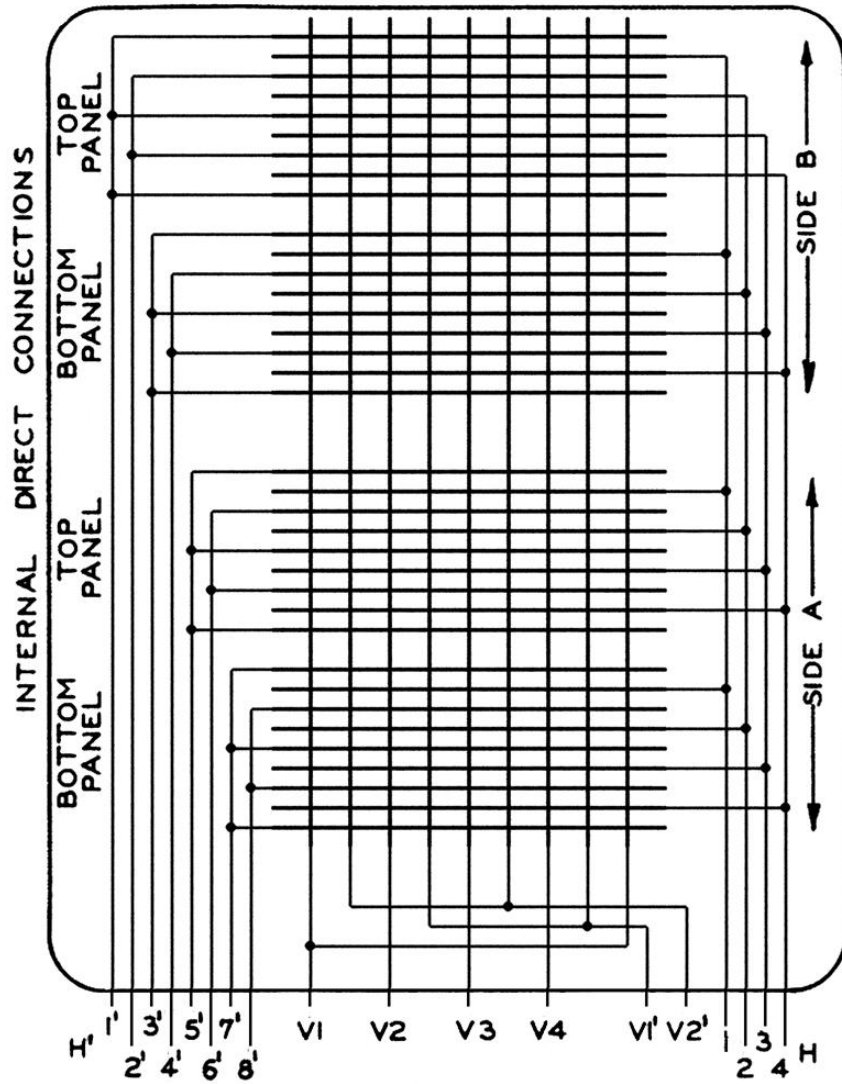


SB-256

SB-256

SELECTIVE ELECTROSTATIC STORAGE TUBE

Fluorescent Screen Readout Map



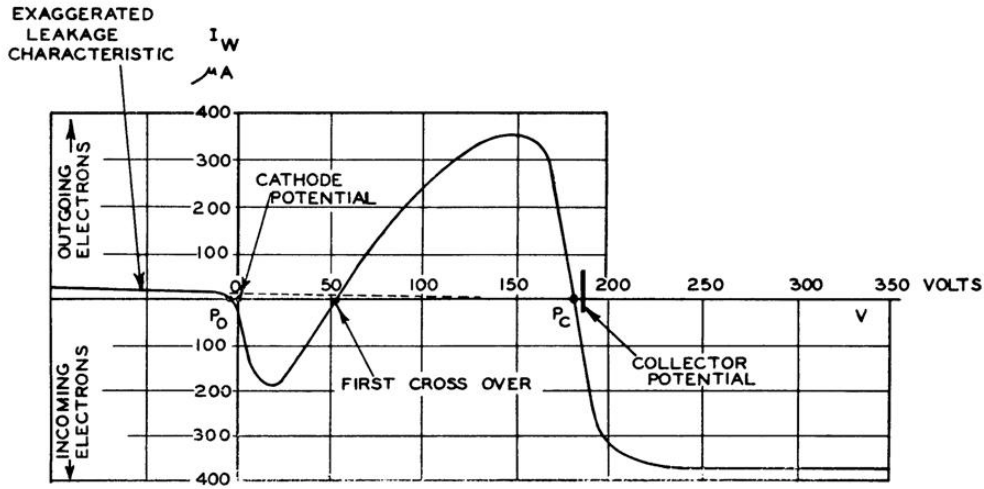


SB-256

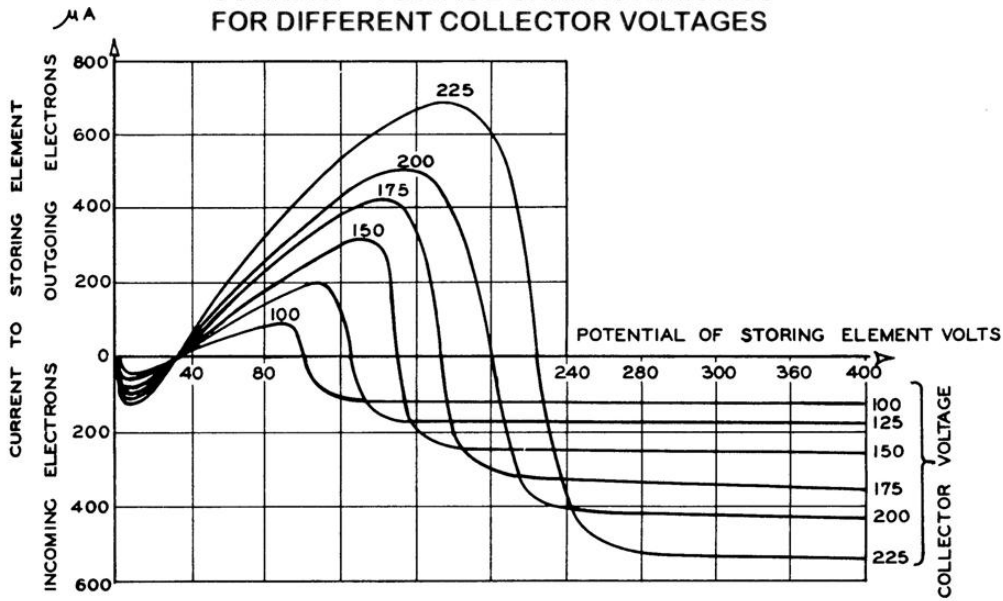
SB-256

SELECTIVE ELECTROSTATIC STORAGE TUBE

CURRENT - VOLTAGE CHARACTERISTIC OF STORING ELEMENT



CURRENT - VOLTAGE CHARACTERISTICS FOR DIFFERENT COLLECTOR VOLTAGES



READING CURRENT VERSUS ELEMENT POTENTIAL

